

Appendix A: Atari Results

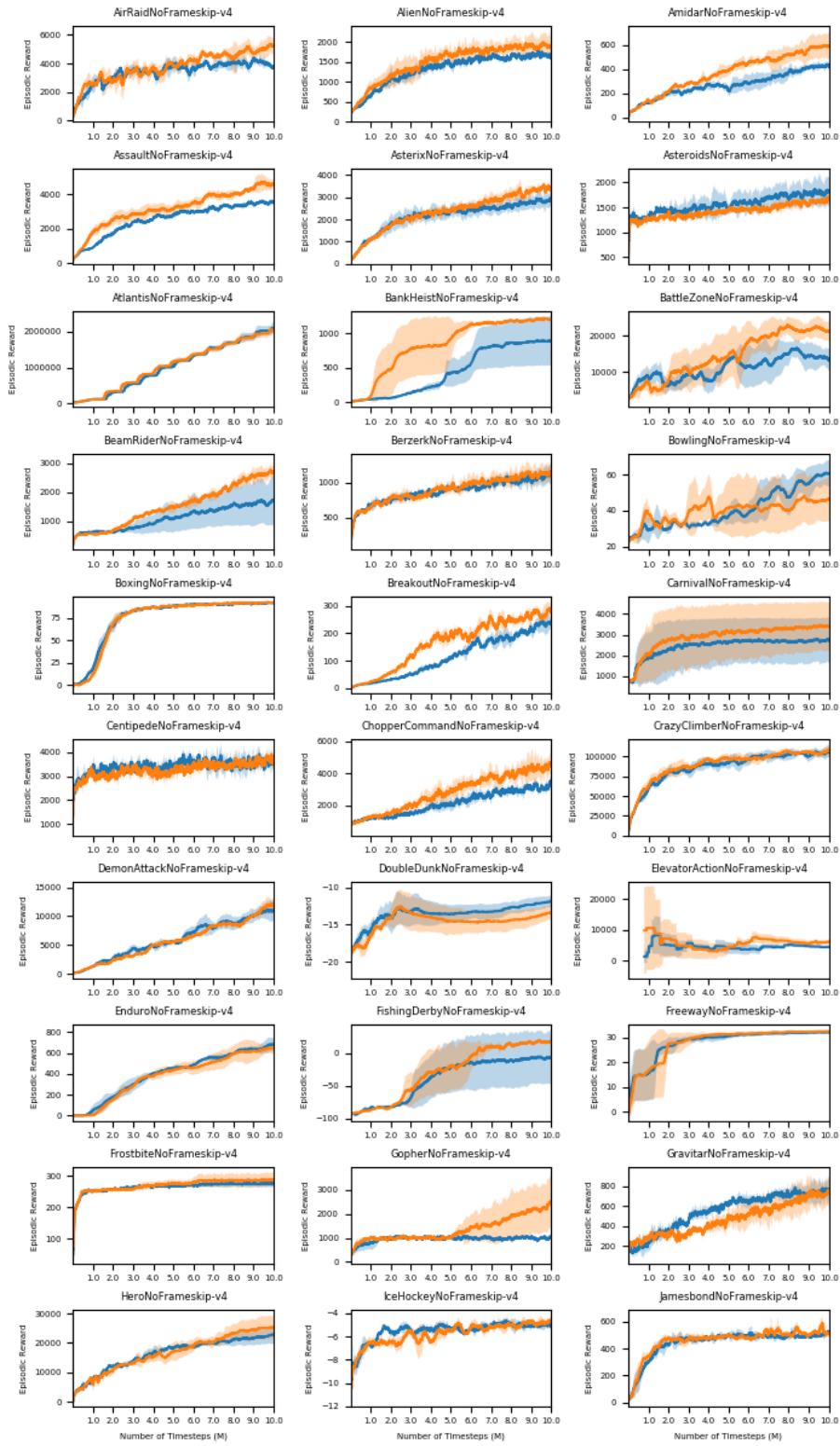


Figure 11. Comparison of SCN-8 (blue) and MLP-512 (orange) on number 1-30 of all 60 Atari games included in OpenAI Gym at the time of publication.

Structured Control Nets for Deep Reinforcement Learning

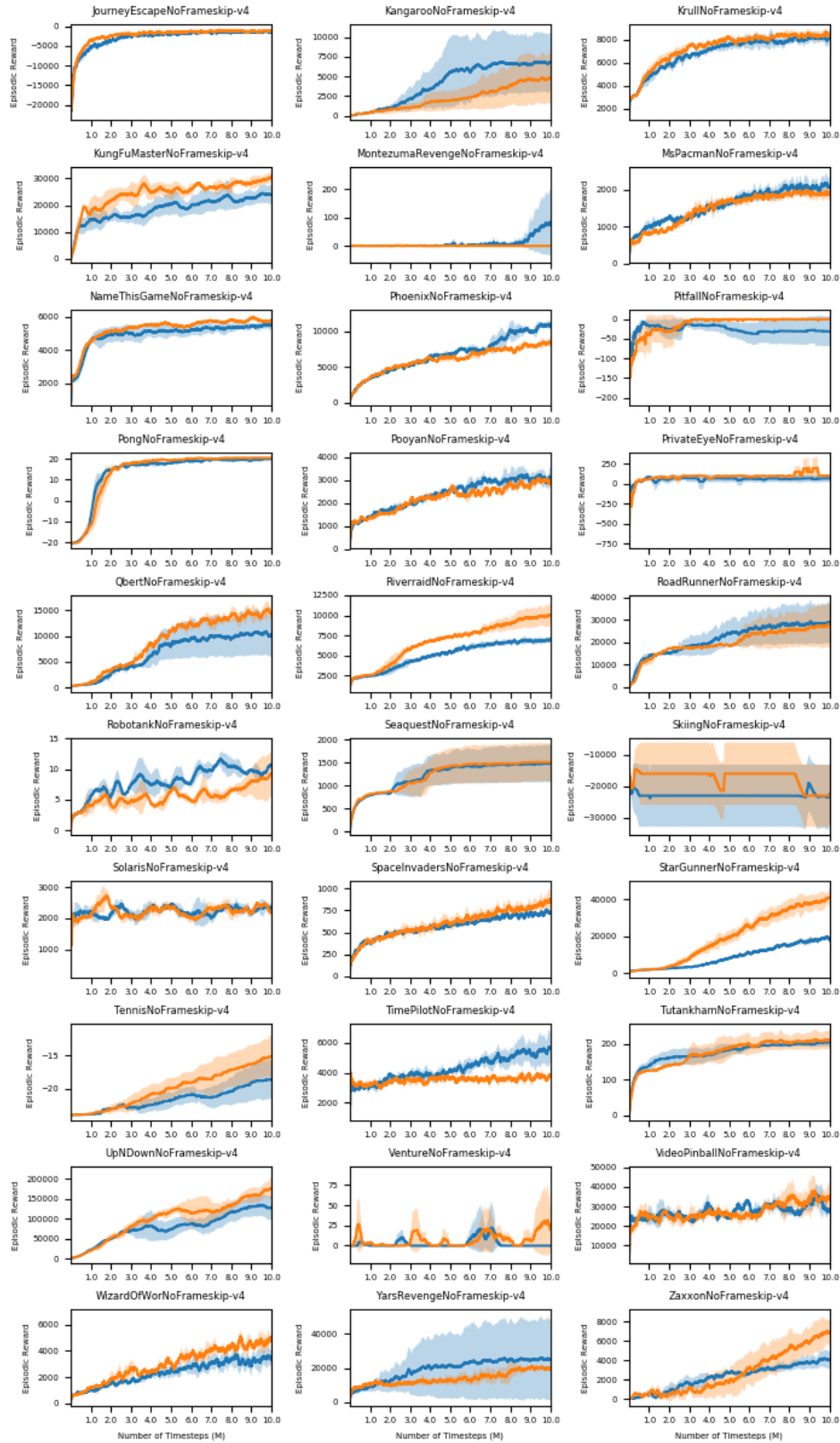


Figure 12. Comparison of SCN-8 (blue) and MLP-512 (orange) on number 31-60 of all 60 Atari games included in OpenAI Gym at the time of publication.